



ANATOM 32 Fit

FIT YOUR BUSINESS & SUCCESS

Manufactured by :

Shenzhen Anke High-tech Co., Ltd.

Address: Block B, LingYa Industrial Zone, Tangtou No.1 Road,

Ba'dan District, Shenzhen, 518108, P.R.China

Tel: +86-755-21622518 26688889

Fax: +86-755-26695307 26685908

Email: anke@anke.com Skype: anke.1986

Website: www. anke.com

Marketed & Serviced in India by :

Elesonic Technologies Private Limited,

Saheban Bagicha, Nodakhali,

Bakhrat, South 24 Parganas,

West Bengal, India

Website : <http://www.elesonicgroup.com>

Contact : Email - contact@elesonicgroup.com.

Marketed & Serviced in Africa / Europe by :

Elesonic Healthcare Limited,

Plot Number - 224, Gloucester Avenue,

Lower Kyambogo Estate, Kampala, Uganda

Website: <http://www.elesonicgroup.com>

Contact : Email - contact@elesonicgroup.com

elesonic.uganda@gmail.com

Insight into life





FIT YOUR COSTS ANATOM 32 Fit

The healthcare market is changing and transforming, cost effective CT scanner is increasingly becoming the expectation for basic clinical applications. Healthcare providers therefore have to manage an increasing number of patients at lower costs. Now comes ANATOM Fit! ANKE has brought you the best outcomes to fit your business and success with the excellent performance of ANATOM Fit.

ANATOM Fit is affordable and, of course, versatile to easily handle with all basic clinical applications in routine scanning. Thoughtfully, ANATOM Fit is designed to deliver you benefits of diagnostic confidence, low dose for patient care, financial performance and excellent clinical application.

Cost-Saving in Purchase

ANATOM Fit is an economic product specially designed for routine clinical applications. Streamlined workflow and superior comprehensive clinical functions greatly improve the clinical excellence, operational efficiency and profitability.

Cost-Saving in Running

Low total power consumption and AccuSaving energy saving technology remarkably reduce your daily running cost.

Cost-Saving in Maintenance

Equipped with the world-class high end X-ray tube and HV generator, especially ANKE's proprietary detector with long lifetime and high efficiency

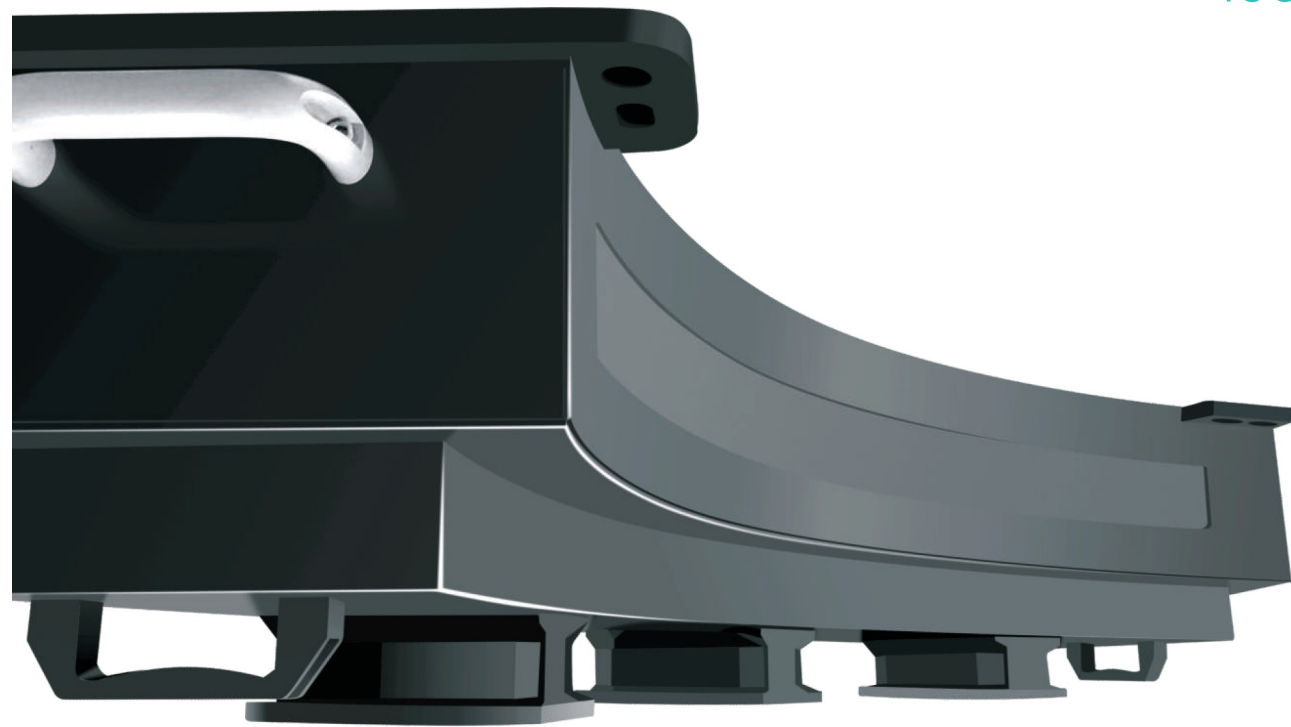
Cost-Saving in Repair

Small X-ray tube and HV generator will remarkably reduce your cost of replacement after warranty.

Cost-Saving in Facility

Small size and energy consumption require you less facility cost

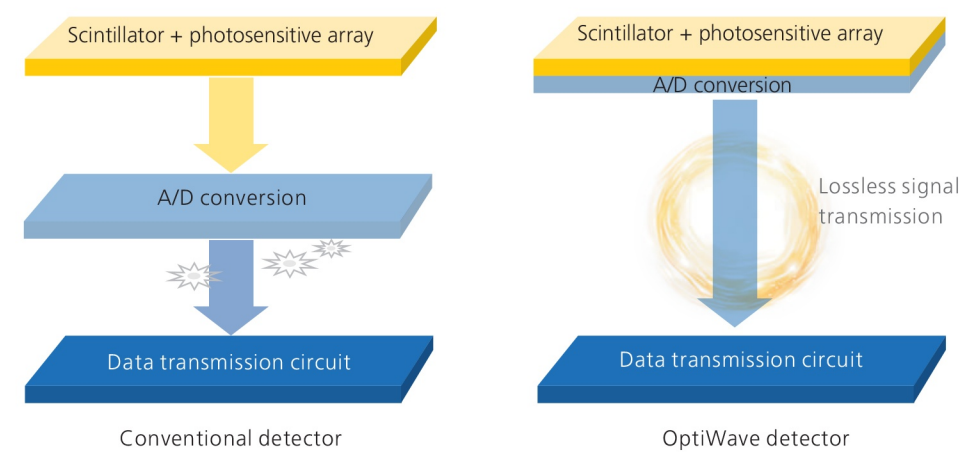
**FIT YOUR
BUSINESS & SUCCESS**



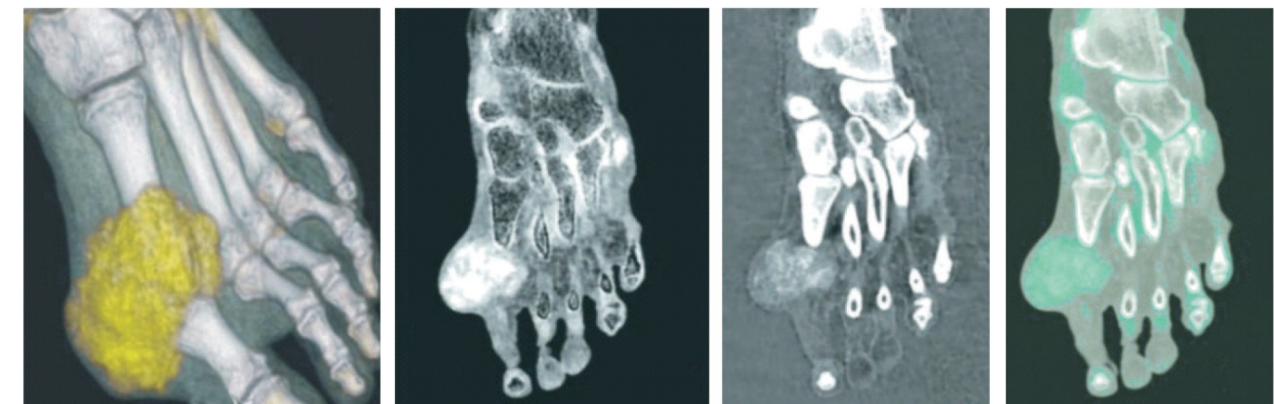
WORLD LEADING TECHNOLOGIES

The newly designed ANATOM Fit adopts the world leading technologies inherited from precision technology platform. The latest OptiWave detector and innovative precision fast scanning technology are combined with Admir^{3D} iterative technology to achieve lower dose and lower consumption but higher image quality.

OptiWave Detector



DUAL-ENERGY IMAGING TECHNIQUE TO DEVELOP ADVANCED PRECISE CLINICAL DIAGNOSIS



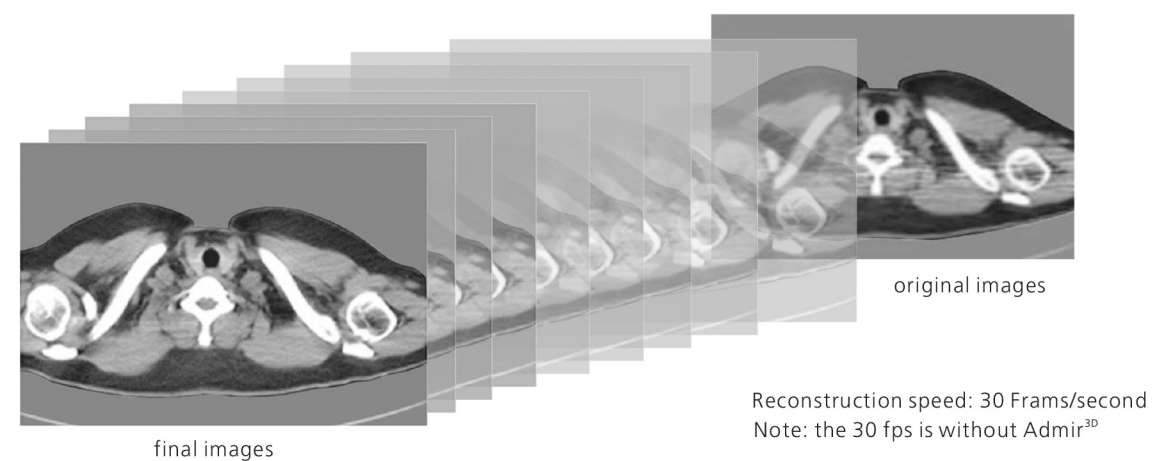
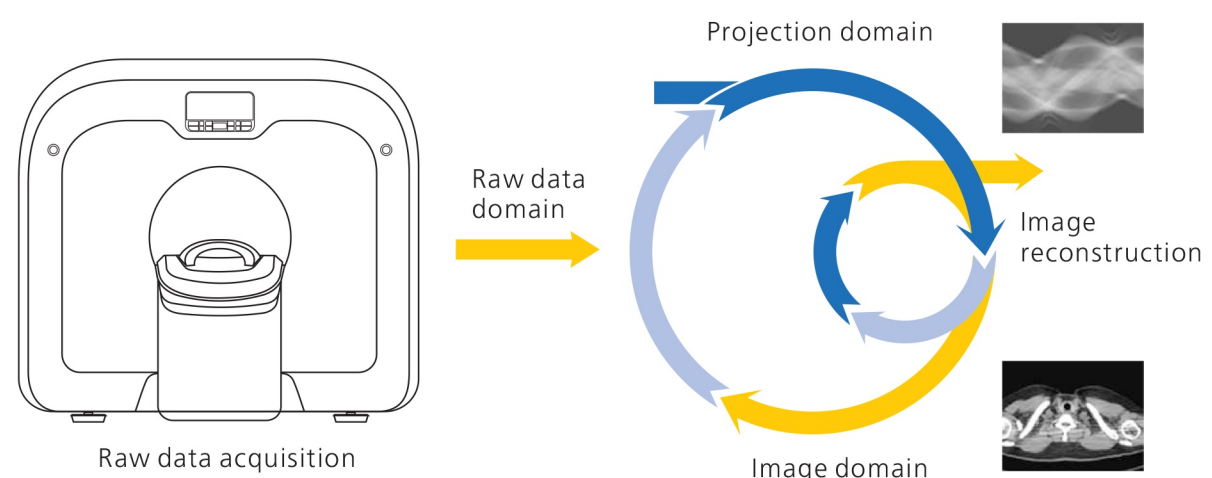
ANKE's unique dual energy imaging can realize noninvasive, specific and rapid visualization of urate crystals in patients with gout, and help radiologists to make accurate diagnosis.



Dual energy imaging of ANATOM Fit can provide accurate imaging of kidney stones by identifying uric acid or calcium oxalate compositions. It is convenient for doctors to make a more confident diagnosis and provide the best treatment plan for the patients in time.

Admir^{3D} iterative reconstruction technology

Admir^{3D} applies mathematical and physics models to accurately construct and describe the signal's quantum characteristics. Iterative operations are performed in the three domains of raw data, projection and image, to greatly reduce the image noise and achieve optimal image quality with low dose.



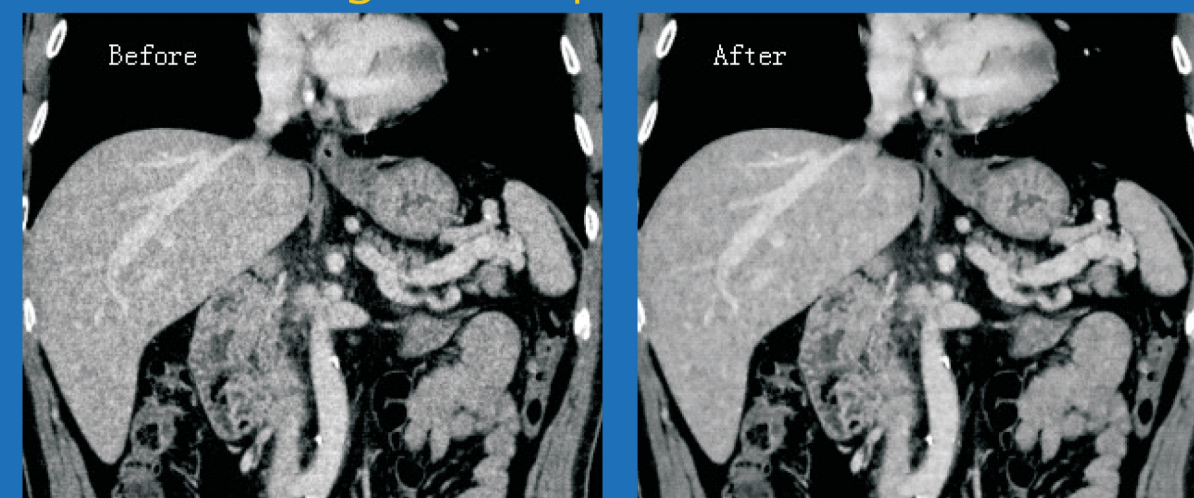
Automatic mA technology automatically controls tube current to increase or decrease the signal as necessary to maintain constant image noise while lowering dose

Pediatric dose optimization - specially dedicated protocols for pediatric patients with ultra-low dose care

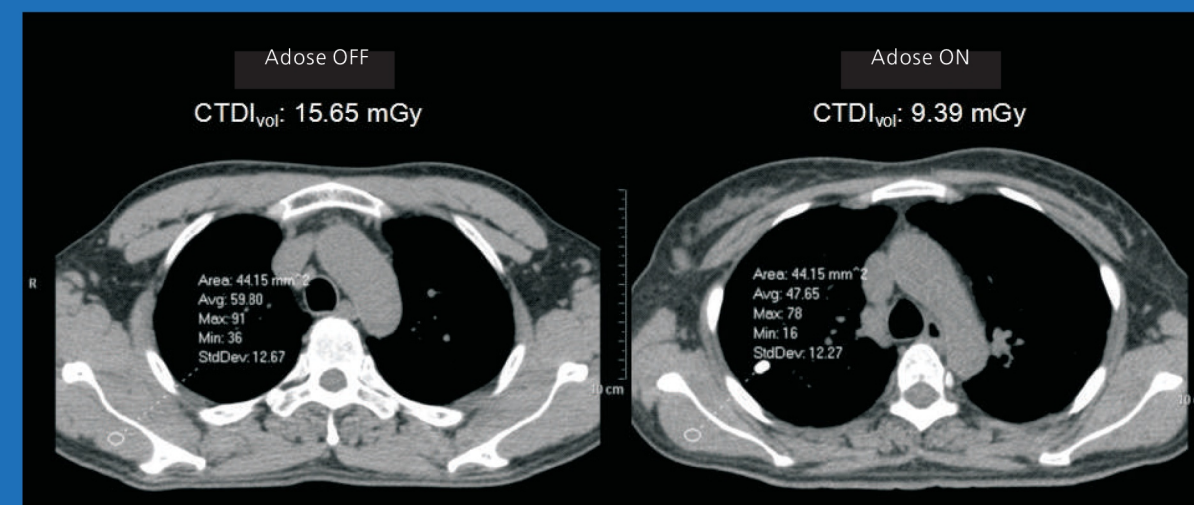
Admir^{3D} can achieve low dose and low noise scanning without compromising image quality

Dose monitoring - A comprehensive dose management solution, based on principle of as low as reasonably achievable (ALARA), tracks and monitors patients, cumulative radiation dose, and receives notifications and alerts if your predetermined dose levels exceeded

Fit Your Dose Adose Dose management platform



Dose reduction by 45%



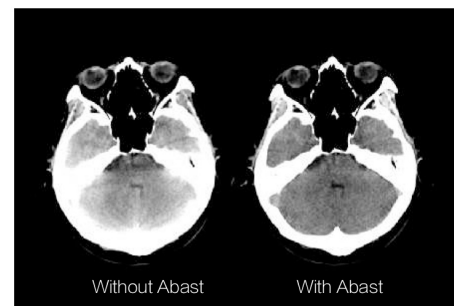
Fit Your Applications

AccuOrgan-Targeted organ imaging

To achieve high precision imaging of each part of human body at low dose and low energy consumption

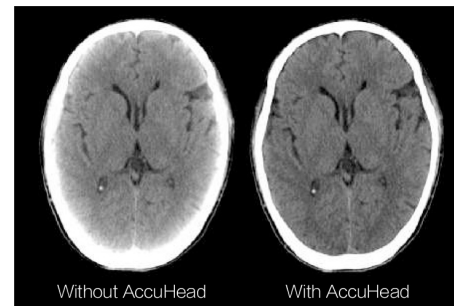
Abast-Bone artifact suppression technology

Abast eliminates the X-ray beam hardening effects to the cerebellum, brain stem and other parts of the brain and clearly shows the structure and lesions of the brain stem and cerebellum



AccuHead-Gray & white matter enhancement technology

AccuHead technology is specifically designed for brain scans to improve the contrast between gray matter and white matter without sacrificing image quality



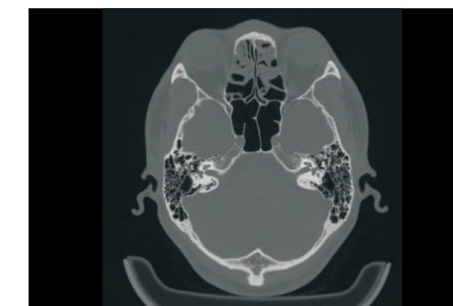
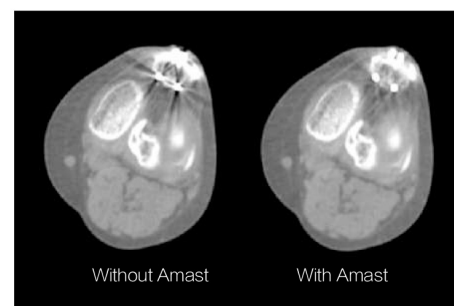
AccuOrgan-High resolution lung imaging

High resolution images of the lung can be obtained at only 30%~40% of conventional radiation dose



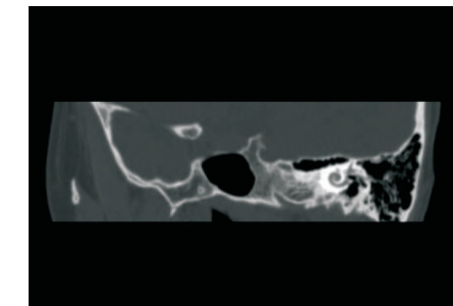
Amast-Metal artifact suppression

Dual-domain iteration is adopted to effectively remove metal artifacts and restore the soft tissue around the metal



AccuImage-Microscopic imaging technology

1024x1024 matrix to display more details of the pathological changes and provide reliable information for early detection, early diagnosis and early treatment of the diseases



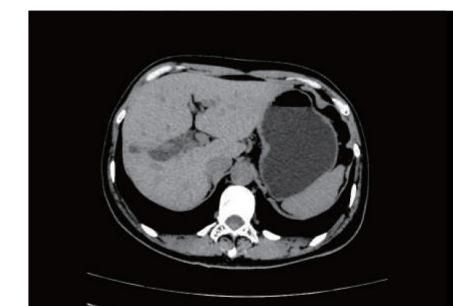
AccuOrgan-Inner ear imaging

Professional high resolution inner ear imaging clearly shows the cochlear vestibular, semicircular canals and other fine anatomical parts, ensuring detection rate of small lesions



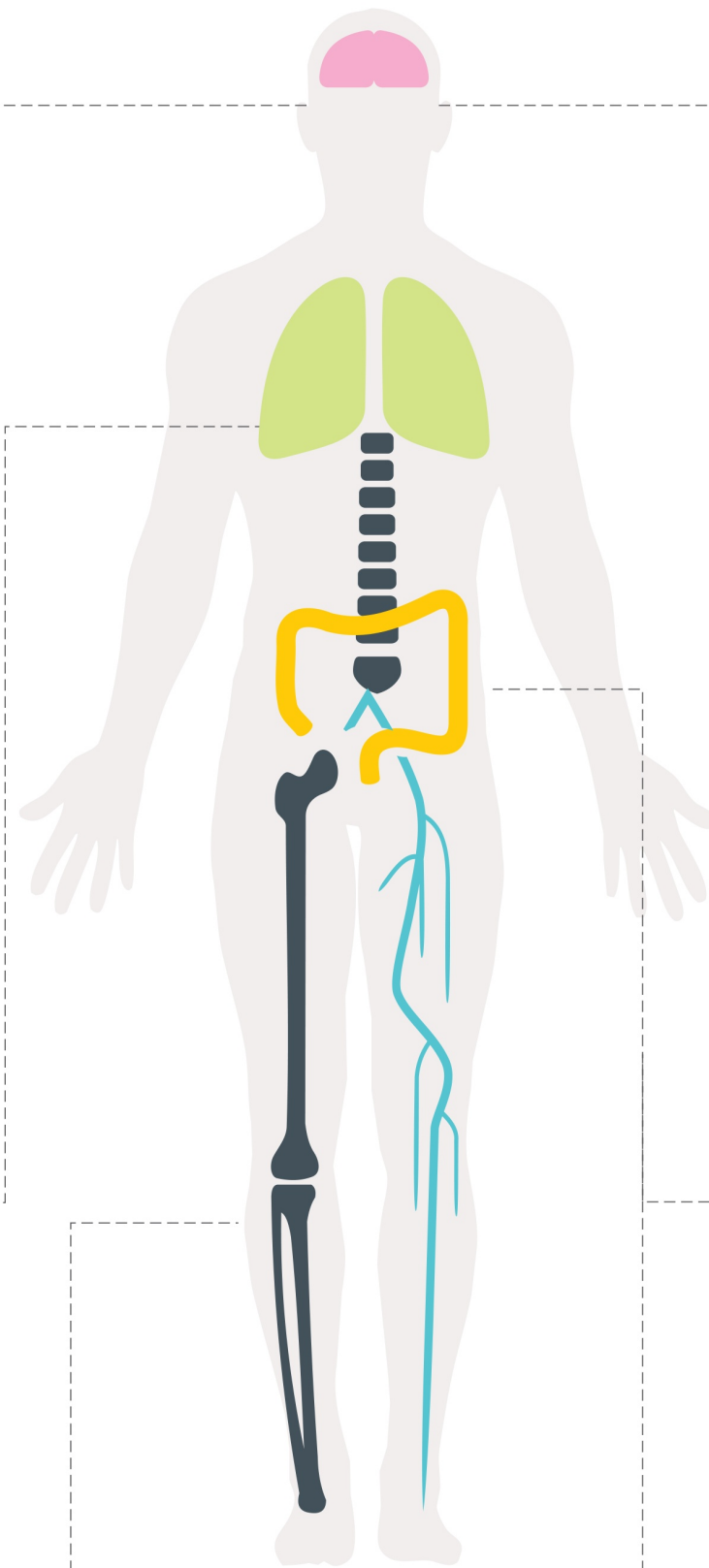
AccuBone-High resolution bone imaging

Enhanced bone edge contrast can provide accurate anatomic relationships and show early destruction and cyst of subchondral bone like lesions and articular cartilage calcifications



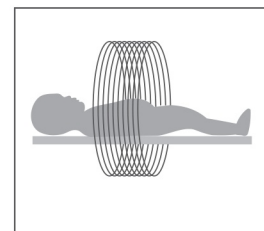
AccuOrgan-Body high resolution imaging

Combined with the AccuImage microscopic imaging technology, AccuOrgan technology can significantly increase the display of fine structure and morphology of the abdomen and provide more accurate images for the early diagnosis of small lesions

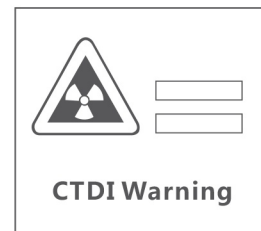


Fit Your Care

AccuDose-Comprehensive low dose imaging

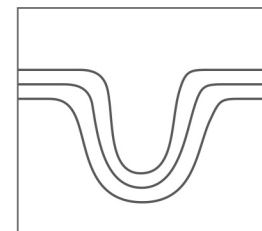


Pediatric Scan Protocol

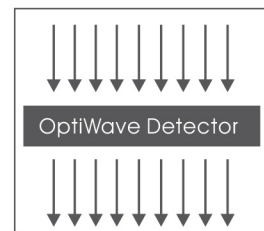


CTDI Warning

Individual Dose Monitoring

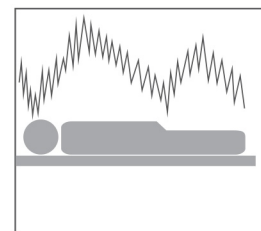


AccuShape Filter

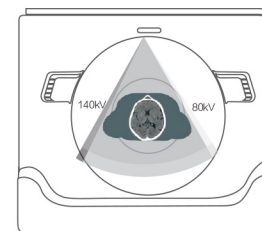


OptiWave Detector

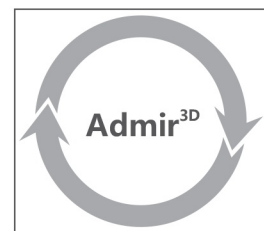
Efficient Detector



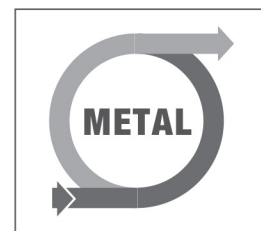
Adose Dose Modulation



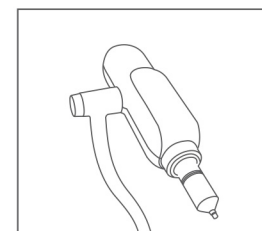
AccuHead



Iterative Reconstruction



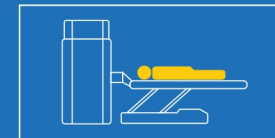
Amast



Contrast Agent Tracking Technology

Fit Your Efficiency

AccuScan-Enjoy easy convenient and efficient operation process greatly improve clinical efficiency to achieve high patient throughput



AccuOrientation

Preset intelligent positioning procedures to enable one-button accurate patient positioning



AccuEmergency

Skip patient registration for emergency scans to save time



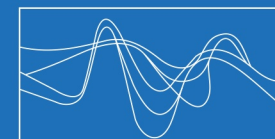
AccuScanning

Carefully designed default scan protocols help to get high quality images with ease



AccuTracking

Automatic bolus tracking to trigger the scan for precise scan timing



AccuReconstruction

Up to 65 frms / sec real-time reconstruction

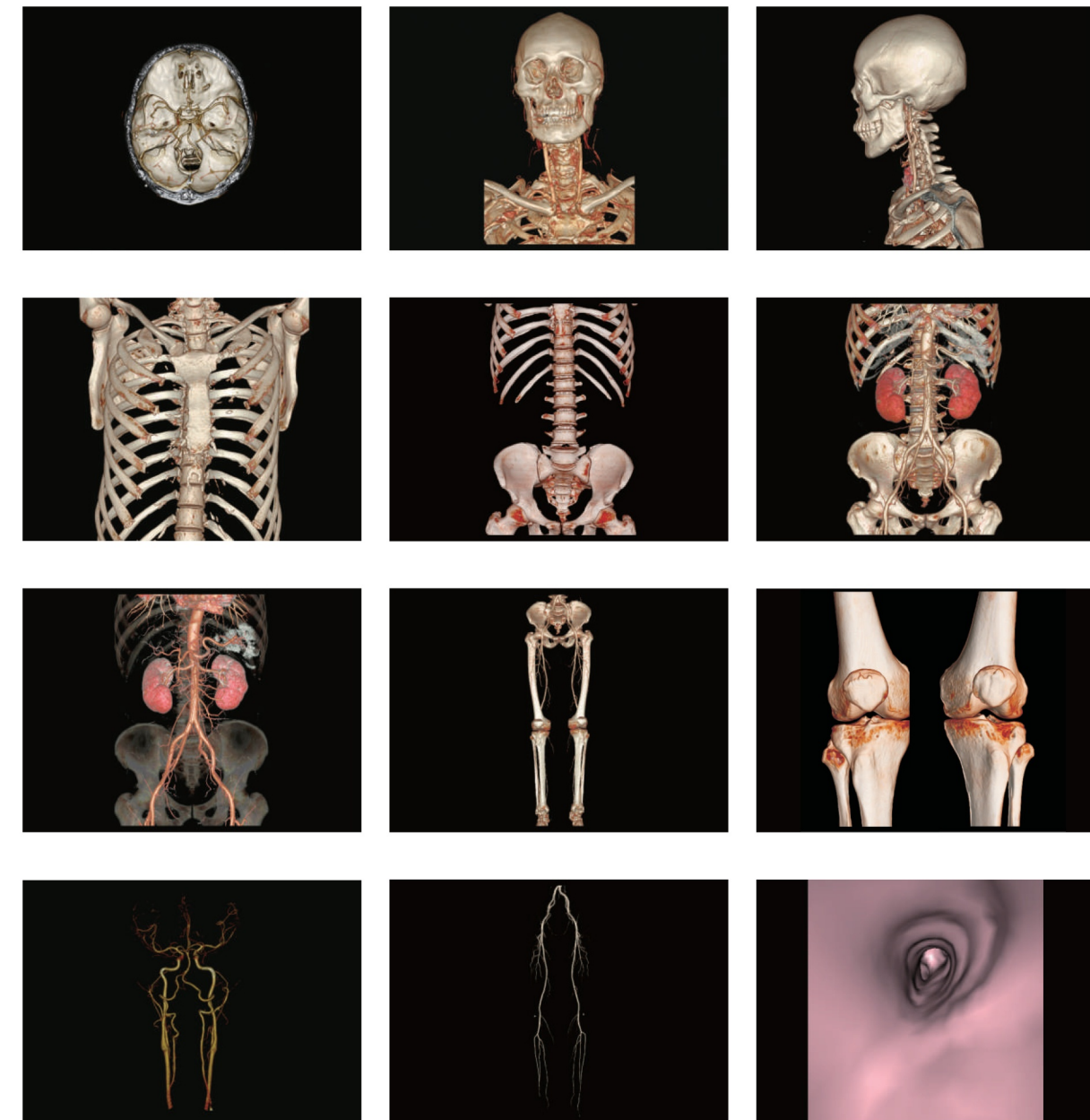
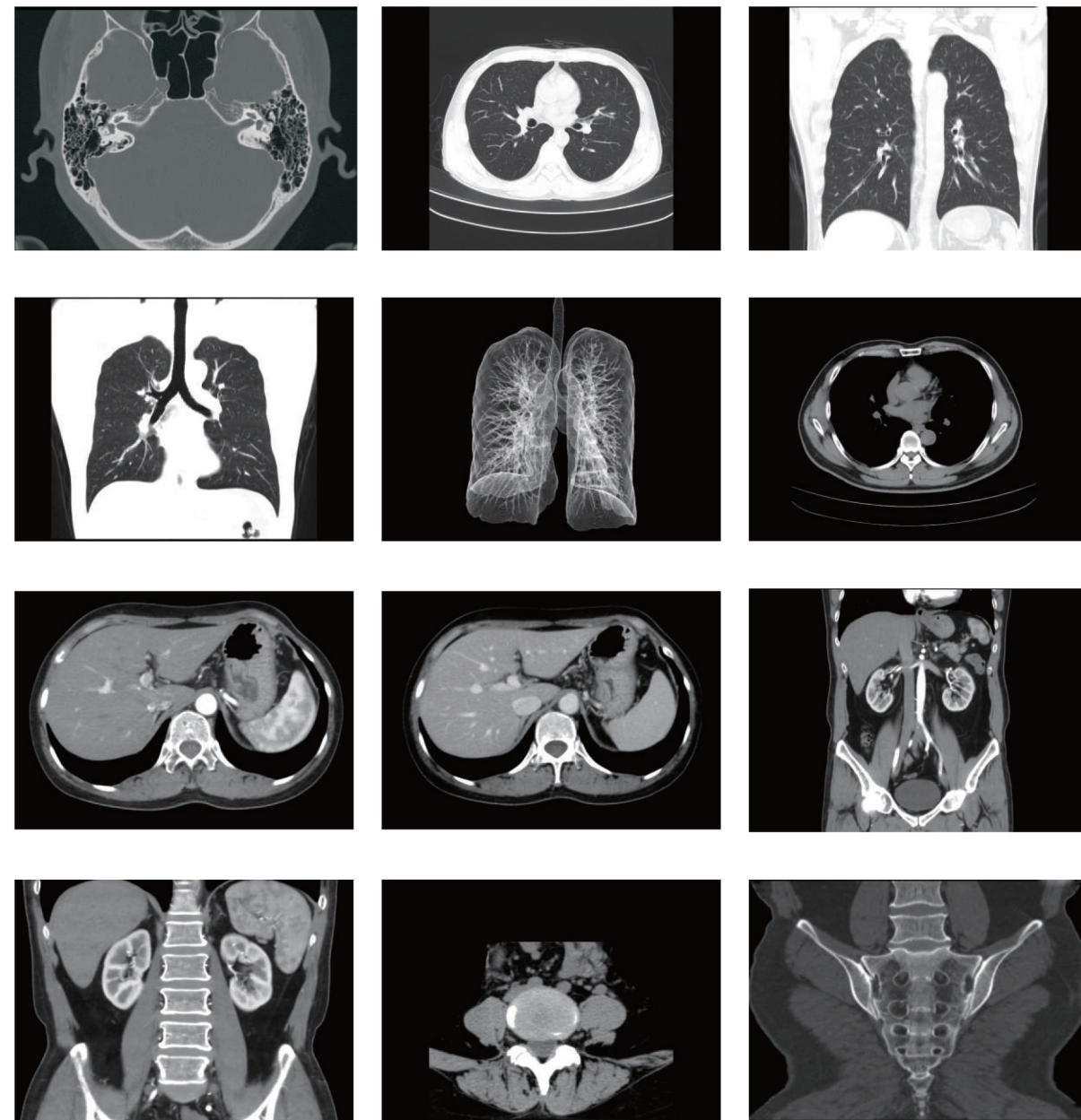


AccuPrinting

Intelligent typesetting and quick printing to save time

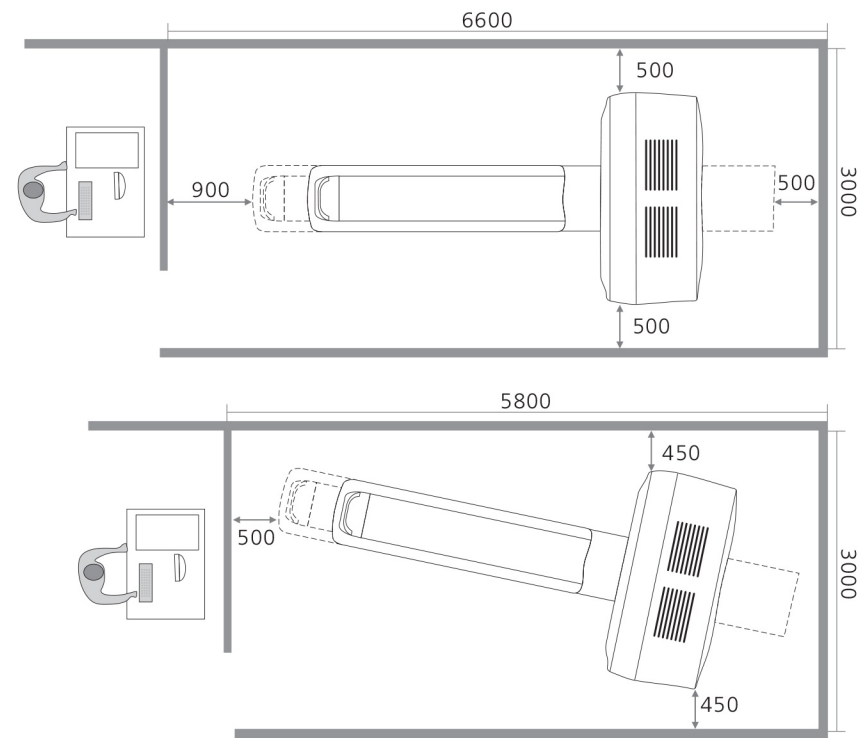
Clinical Applications

Fast, precise and low-dose imaging technologies provide a full range of clinical solutions to meet the current and future clinical diagnostic needs



Fit Your Space

ANATOM Fit has been so compactly designed and engineered to meet the clinical needs of hospitals and facilities with room limitations. The compact footprint and low power demands enable the ANATOM Fit to easily install into many single and dual slice CT rooms. Contact us for specific requirements about optional imaging/viewing/power equipment, floor space and electrical, mechanical, structural or environmental specifications.



AccuSaving Green & Energy-saving

AccuSaving is an innovative energy saving technology. The system will enter the "dormant", which is a low carbon mode, after a certain stand-by time or per user's request. To bring the system back to work status is as easy as to push a button. The system will also remind the user to perform necessary warm-up and calibration procedures, which are fully automated processes. AccuSaving technology can reduce operation and stand-by power consumption, save the electricity cost by 30% by adopting different operation modes in working and off hours



Intelligent segmented sleep



Low power consumption



Low heat dissipation



Service Innovation Creating maximum value for customers

- Service Support within 24 Hours
- Local Service Partners
- On-line Service Support
- After-sales Maintenance Stations